

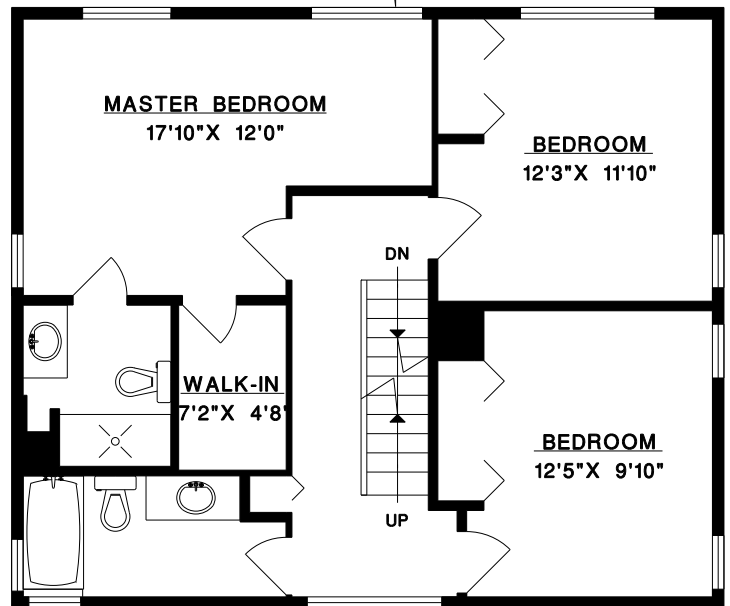
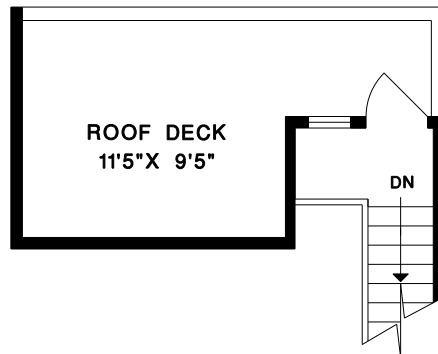
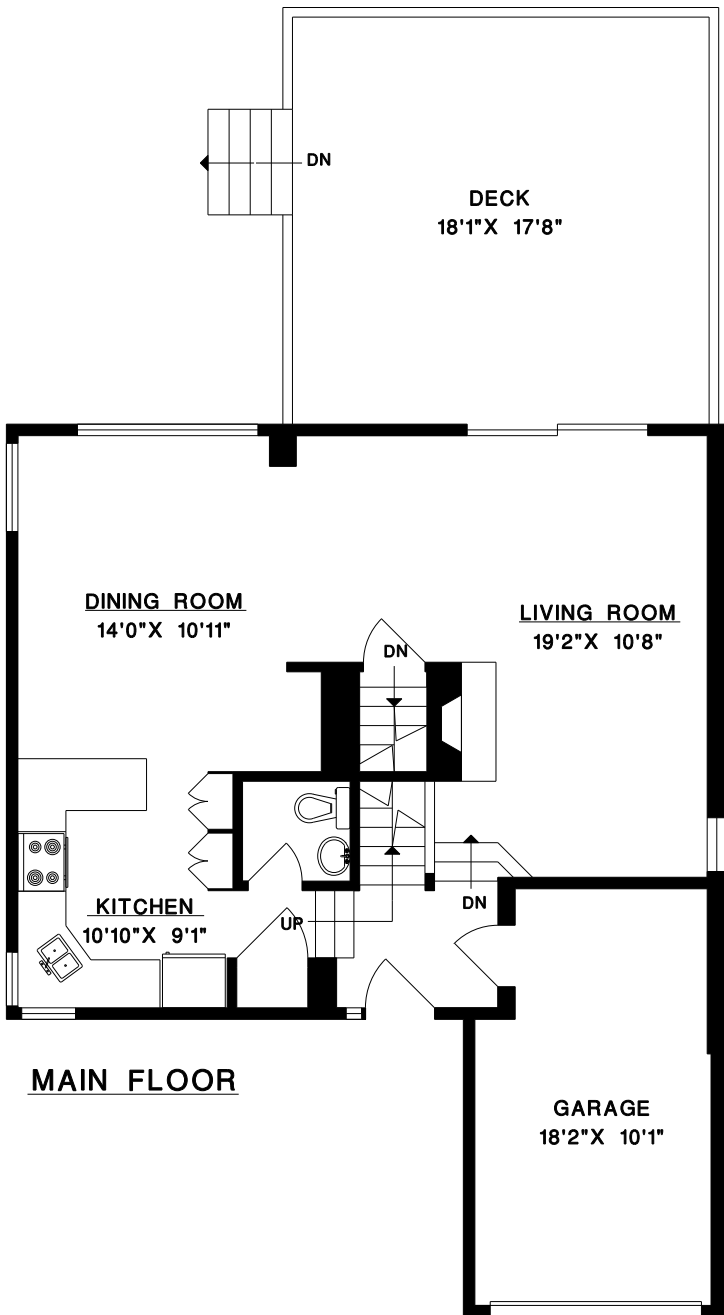
1144 BEAUFORT ROAD  
NORTH VANCOUVER

MAIN FLOOR 756 SQ.FT.  
UPPER FLOOR 807 SQ.FT.  
LOWER FLOOR 611 SQ.FT.  
TOTAL 2,174 SQ.FT.  
DECK 342 SQ.FT.  
GARAGE 200 SQ.FT.  
ROOF DECK 204 SQ.FT.

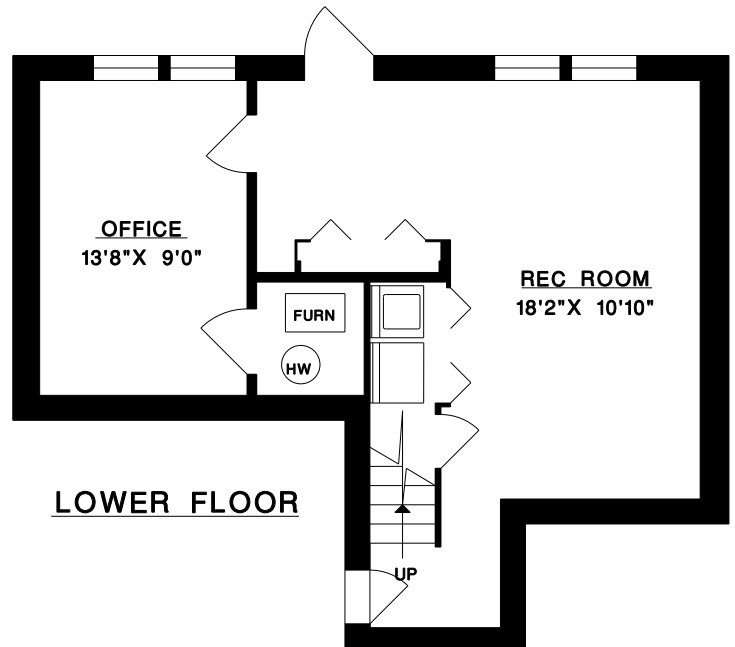
SUE GEDGE  
ANNDEE DEVINE  
phone: 988-8000



Crest Realty  
#101 - 2609 Westview Dr.  
North Vancouver, B.C.  
V7N 4M2



UPPER FLOOR



LOWER FLOOR



DATE: SEP/08  
FILE: 1133-92

**MEASURE MASTERS**  
Floor Planning & Site Print Service  
604-929-8229