

**568 PALISADE DRIVE
NORTH VANCOUVER**

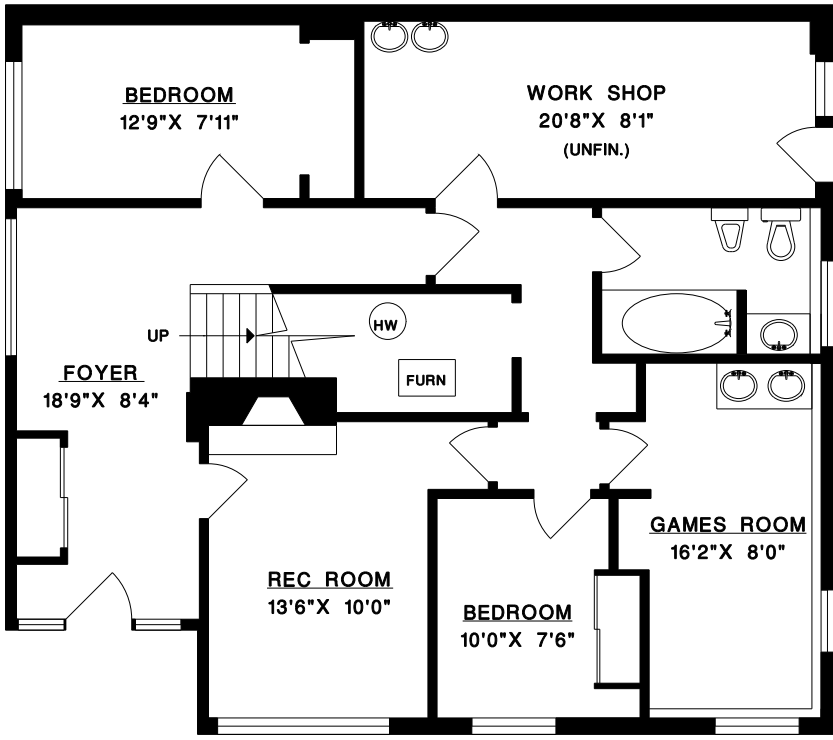
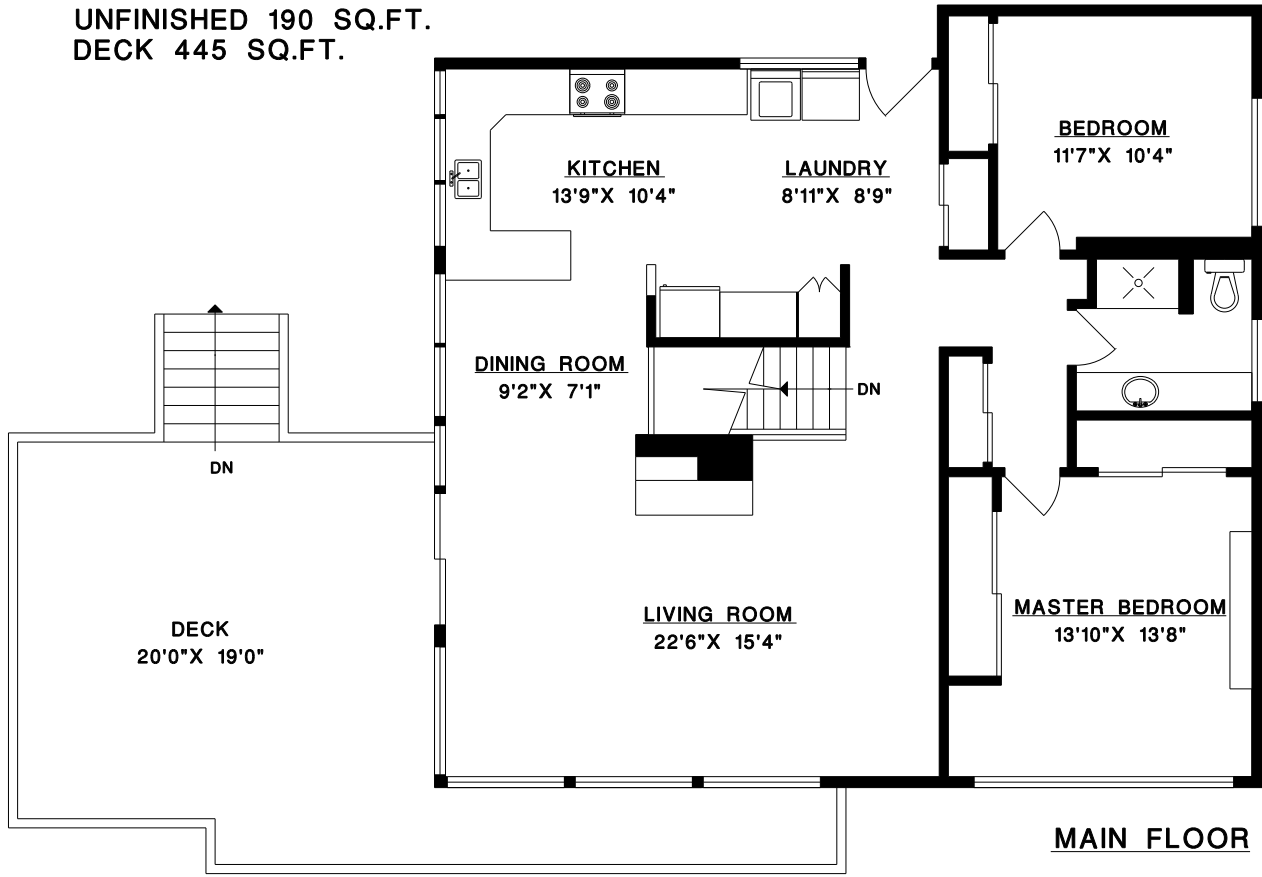
**SUE GEDGE
ANNDEE DEVINE**
phone: 988-8000



Crest Realty
#101 - 2609 Westview Dr.
North Vancouver, B.C.
V7N 4M2

MAIN FLOOR 1,291 SQ.FT.
LOWER FLOOR 1,025 SQ.FT.
TOTAL 2,316 SQ.FT.

UNFINISHED 190 SQ.FT.
DECK 445 SQ.FT.



DATE: APR/08
FILE: 1133-86



LOWER FLOOR