

SUE GEDGE
ANNDEE DEVINE
 phone: 988-8000



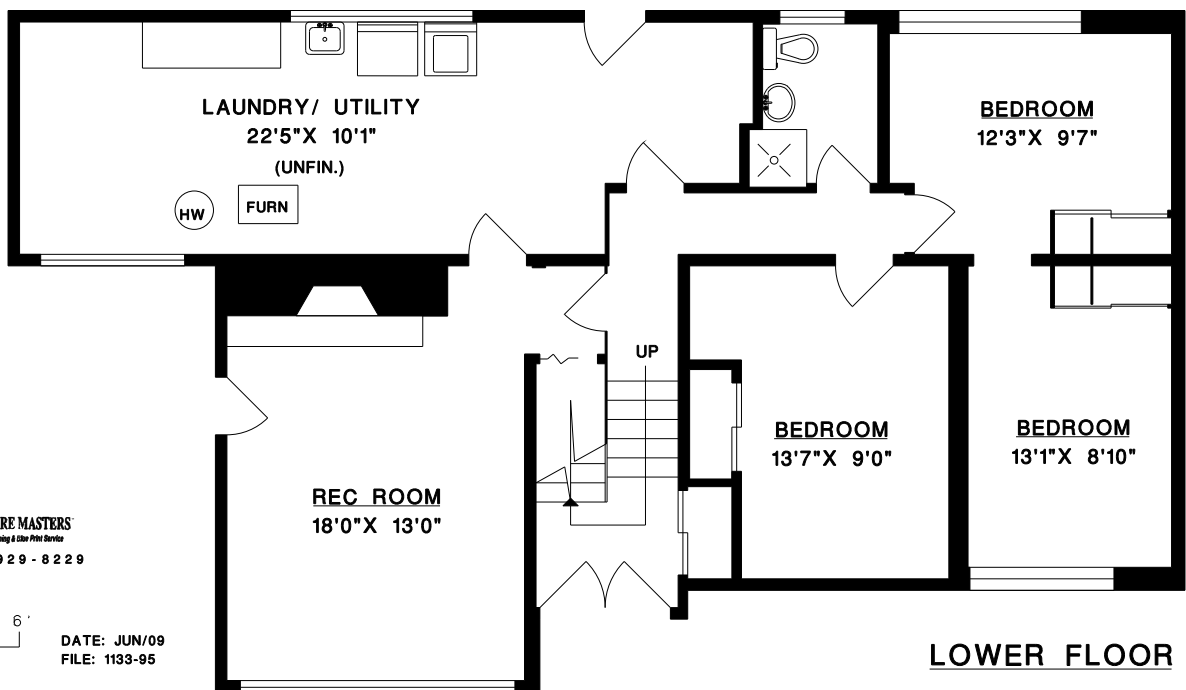
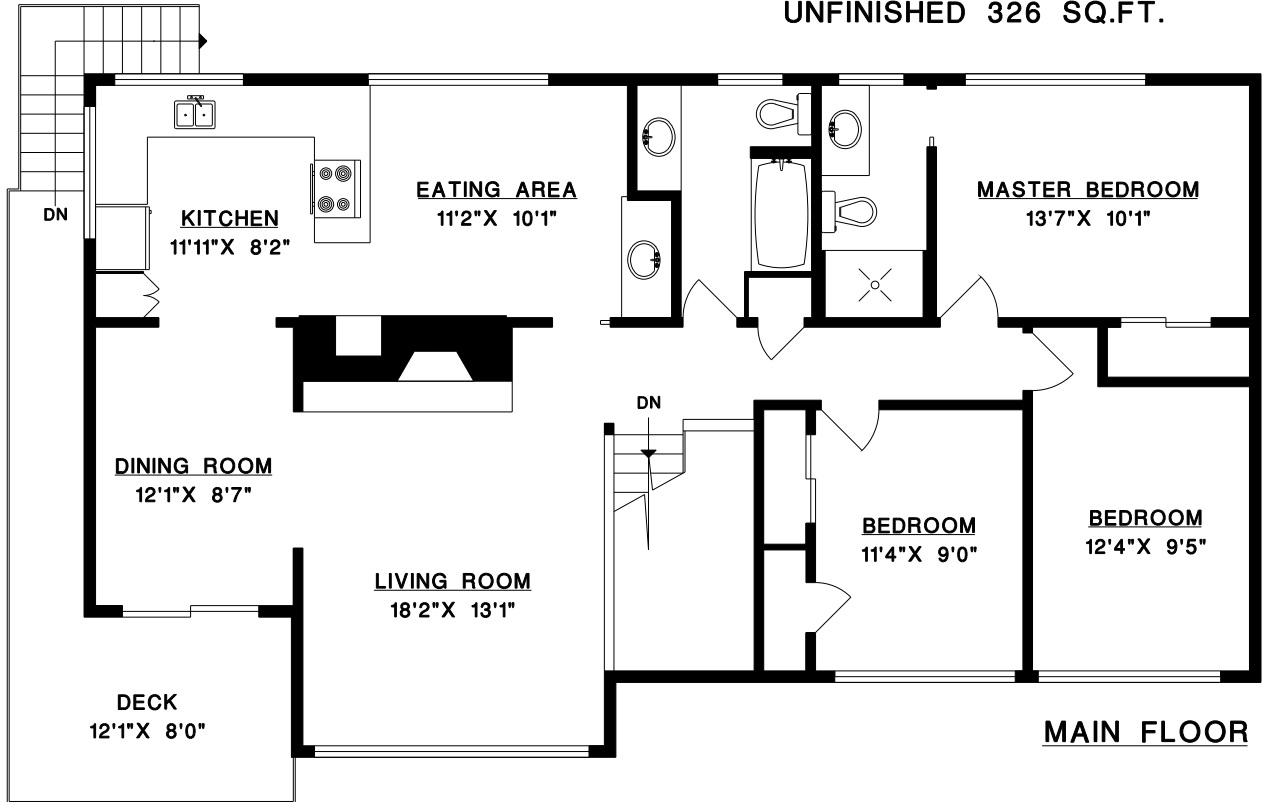
Crest Realty
 #101 - 2609 Westview Dr.
 North Vancouver, B.C.
 V7N 4M2

764 EDGEWOOD ROAD
NORTH VANCOUVER

MAIN FLOOR 1,312 SQ.FT.
 LOWER FLOOR 905 SQ.FT.

TOTAL 2,217 SQ.FT.

DECK 162 SQ.FT.
 UNFINISHED 326 SQ.FT.



MEASURE MASTERS
 Floor Planning & User Print Service
 604-929-8229



DATE: JUN/09
 FILE: 1193-95